

# IMMINGHAM EASTERN RO-RO TERMINAL



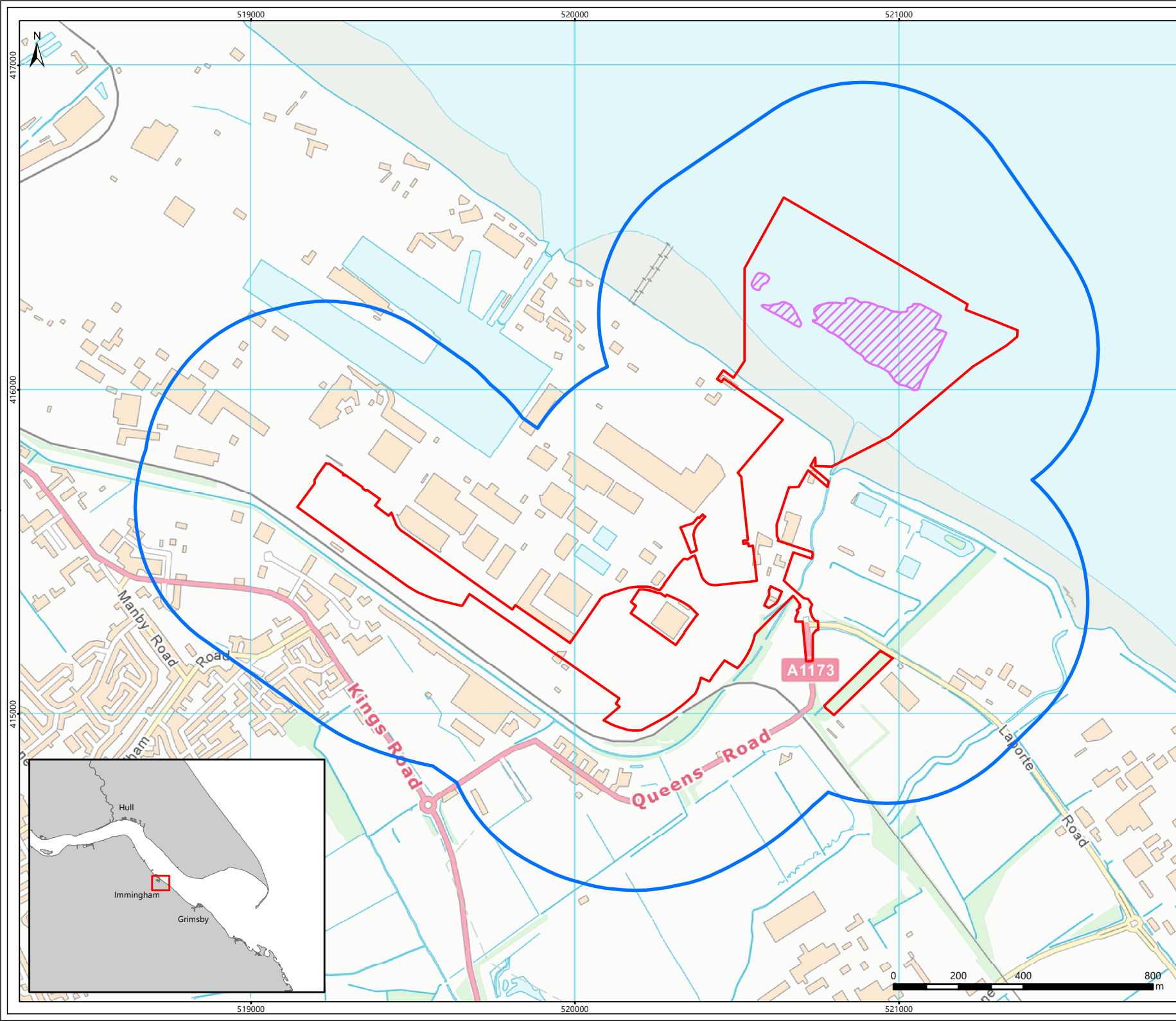
Environmental Statement: Volume 2  
Figures: Chapter 15: Cultural Heritage and Marine Archaeology  
Document Reference: 8.3.15

APFP Regulations 2009 – Regulation 5(2)(a) and 5(2)(e)  
PINS Reference – TR030007

December 2022

**Figures**

- 8.3.15(a) Figure 15.1 Site location and study area
- 8.3.15(b) Figure 15.2 Palaeogeographic features of archaeological potential
- 8.3.15(c) Figure 15.3 Palaeogeographic feature data example 1
- 8.3.15(d) Figure 15.4 Palaeogeographic feature data example 2
- 8.3.15(e) Figure 15.5 Palaeogeographic feature data example 3
- 8.3.15(f) Figure 15.6 Seabed features of archaeological potential
- 8.3.15(g) Figure 15.7 Data examples of seabed features
- 8.3.15(h) Figure 15.8 Photographs of intertidal heritage receptors



- Legend**
- Proposed Application Site
  - Archaeological Study Area 500m buffer
  - Indicative dredge area

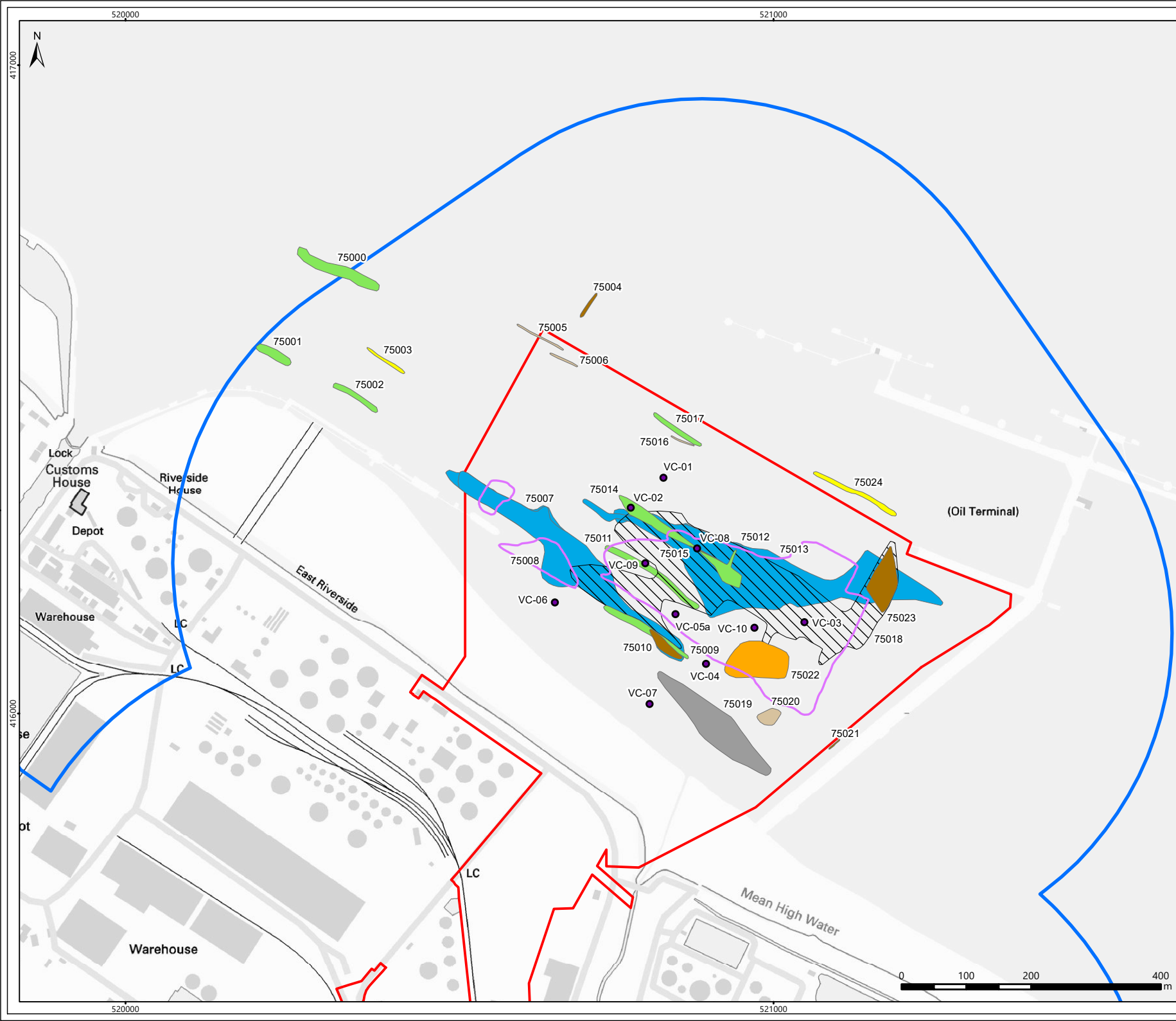
© ABPmer, All rights reserved, 2022.  
 Contains UK Hydrographic Office, Historic Environment Record, and Ordnance Survey data © Crown copyright and database right 2022.  
 Created by Wessex Archaeology.  
 © Wessex Archaeology Ltd 2022, all rights reserved.

Date	By	QA
07/12/2022	NB	RM
<b>Projection</b>	British National Grid	
<b>Scale (A4)</b>	1:15,000	
<b>Project no.</b>	5035 / 252400	
252400_ProjectSugar_fig 15.1.mxd		



**IMMINGHAM EASTERN  
 RO-RO TERMINAL  
 SITE LOCATION & STUDY AREA**

**Figure 15.1**



- Legend**
- Proposed Application Site
  - Archaeological Study Area 500m buffer
  - Indicative dredge area
  - Vibrocore locations

- Paleogeographic features**
- Cut and fill, P1
  - Cut and fill, P2
  - Fine grained deposits, P1
  - High amplitude reflector, P1
  - High amplitude reflector, P2
  - Internal reflector, P2
  - Chaotic unit, P2
  - Channel, P1

© ABPmer, All rights reserved, 2022.  
 Contains UK Hydrographic Office, Historic Environment Record, and Ordnance Survey data © Crown copyright and database right 2022.  
 Created by Wessex Archaeology.  
 © Wessex Archaeology Ltd 2022, all rights reserved.

Date	By	QA
07/12/2022	NB / KJF	RM
<b>Projection</b>	British National Grid	
<b>Scale (A4)</b>	1:7,500	
<b>Project no.</b>	5035 / 252400	
252400_ProjectSugar_fig 15.2.mxd		

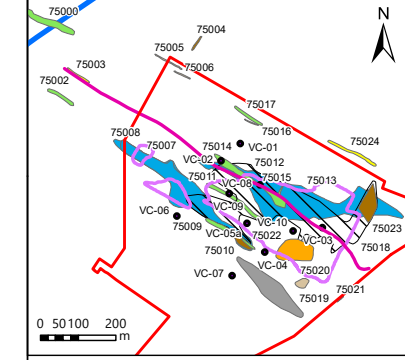
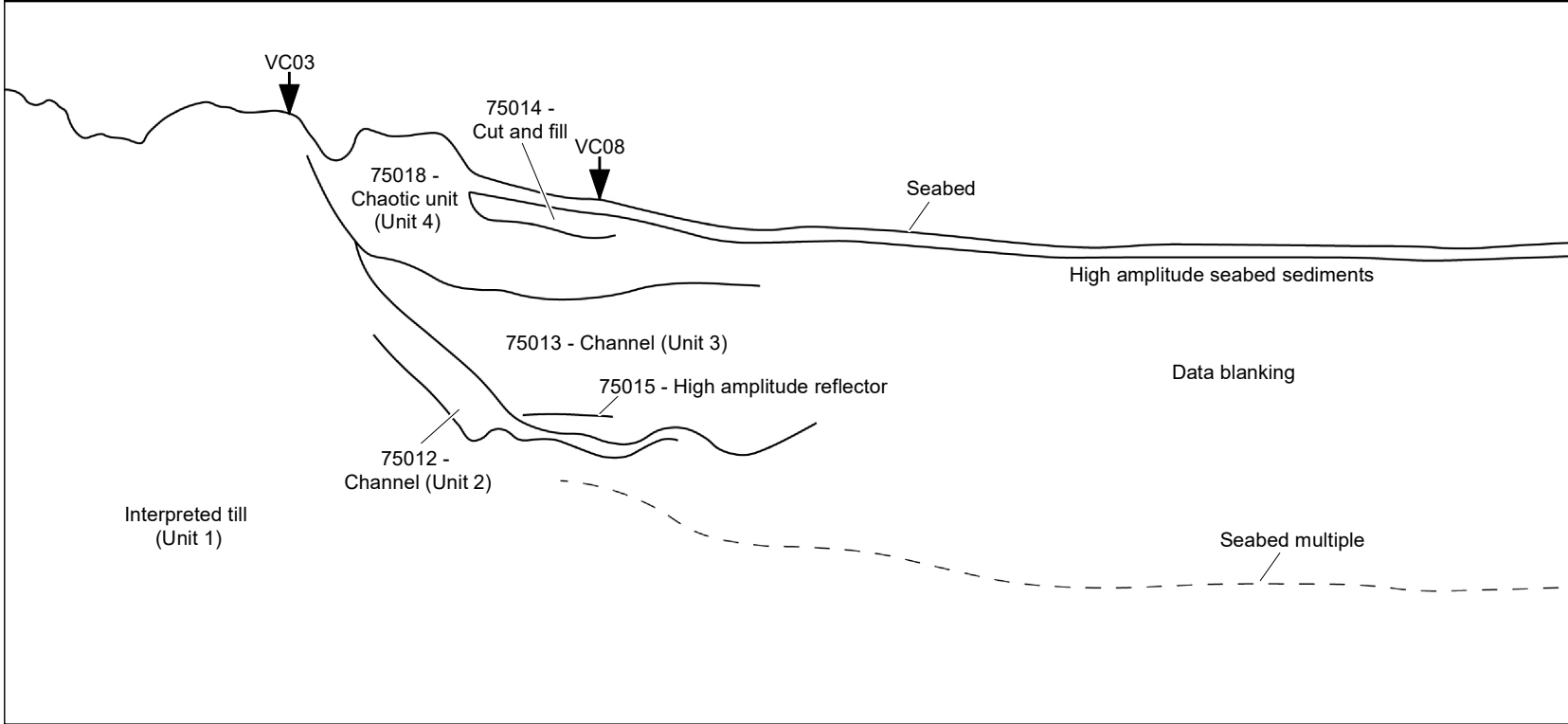
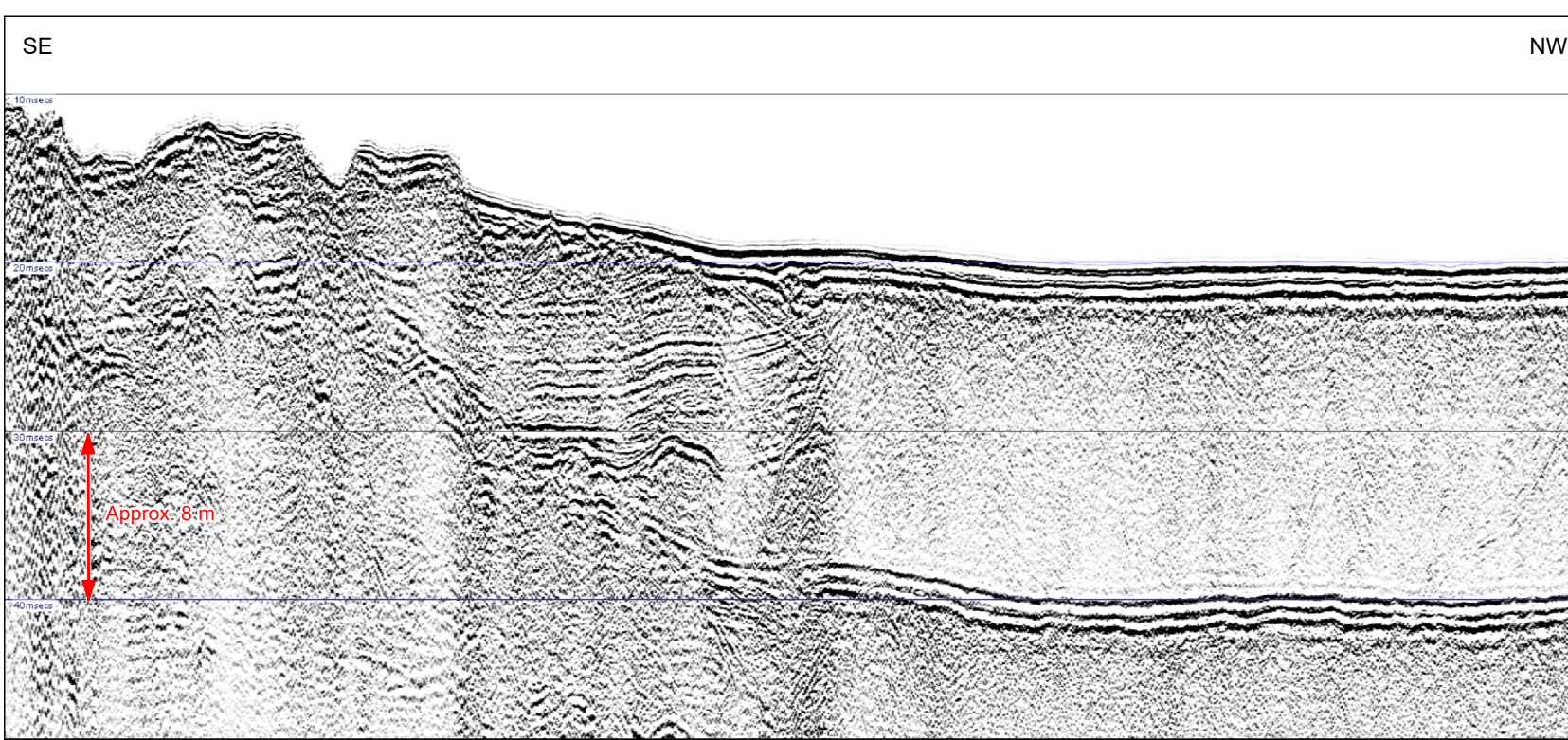


**IMMINGHAM EASTERN  
 RO-RO TERMINAL  
 PALAEOGEOGRAPHIC FEATURES OF  
 ARCHAEOLOGICAL POTENTIAL**

**Figure 15.2**







**Legend**

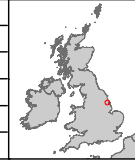
- Proposed Application Site
- Archaeological Study Area 500m buffer
- Indicative dredge area
- Data example location
- Vibrocore locations

**Paleogeographic features**

- Cut and fill, P1
- Cut and fill, P2
- Fine grained deposits, P1
- High amplitude reflector, P1
- High amplitude reflector, P2
- Internal reflector, P2
- Chaotic unit, P2
- Channel, P1

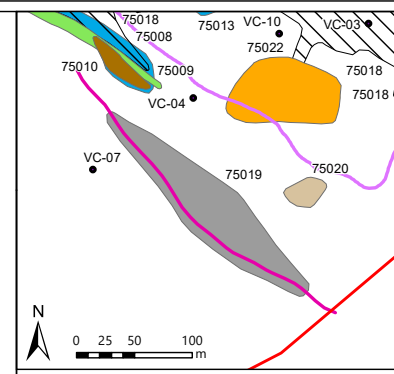
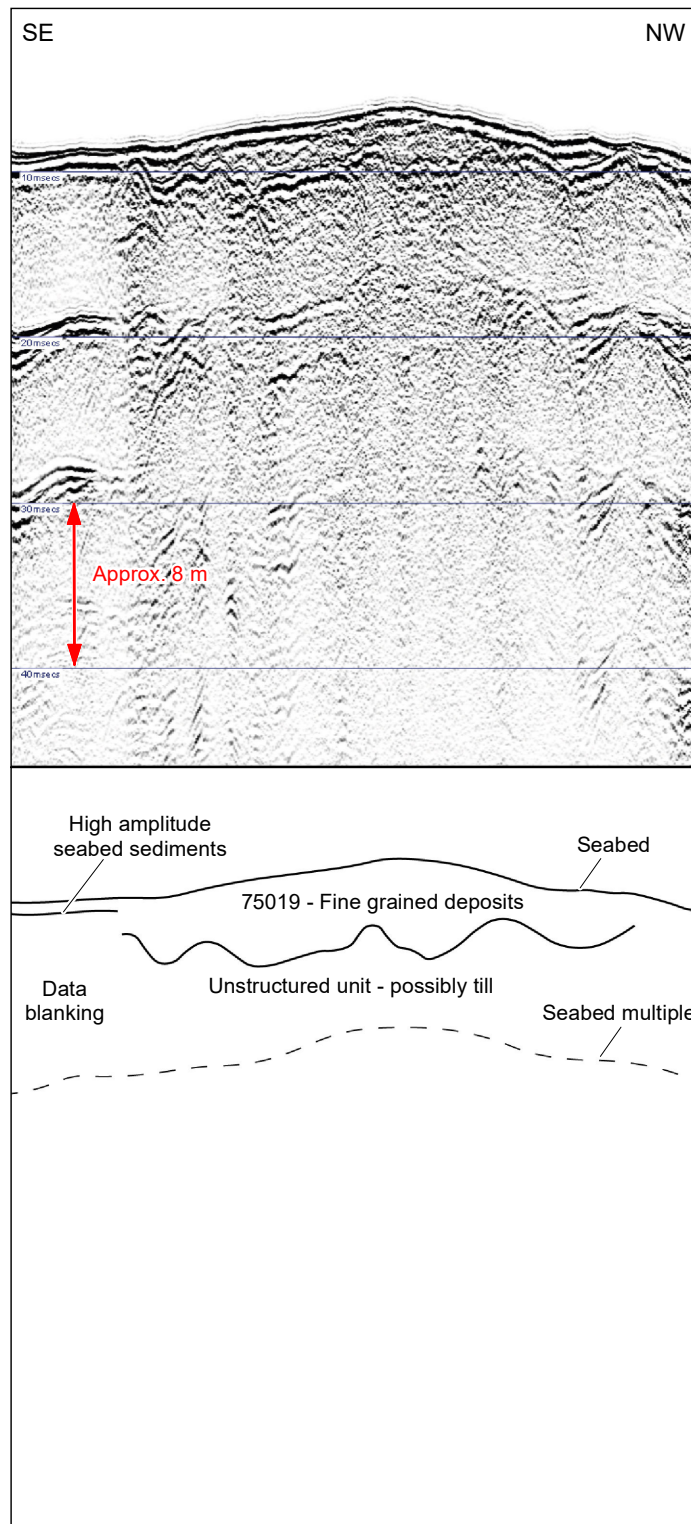
© ABPmer, All rights reserved, 2022.  
 Contains Ordnance Survey data © Crown copyright and database right 2022.  
 Created by Wessex Archaeology.  
 © Wessex Archaeology Ltd 2022, all rights reserved.

Date	By	QA
07/12/2022	KJF	SV
<b>Projection</b>	British National Grid	
<b>Scale (A4)</b>	1:20,000	
<b>Project no.</b>	5035 / 252400	
252400_ProjectSugar_fig 15.3.mxd		



**IMMINGHAM EASTERN  
 RO-RO TERMINAL  
 PALAEOGEOGRAPHIC FEATURE  
 DATA EXAMPLE 1**

**Figure 15.3**



**Legend**

- Proposed Application Site
- Indicative dredge area
- Data example location
- Vibrocore locations

**Paleogeographic features**

- Cut and fill, P1
- Cut and fill, P2
- Fine grained deposits, P1
- High amplitude reflector, P1
- High amplitude reflector, P2
- Chaotic unit, P2
- Channel, P1

© ABPmer, All rights reserved, 2022.  
 Contains Ordnance Survey data © Crown copyright and database right 2022.  
 Created by Wessex Archaeology.  
 © Wessex Archaeology Ltd 2022, all rights reserved.

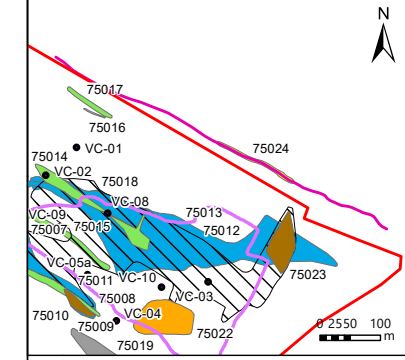
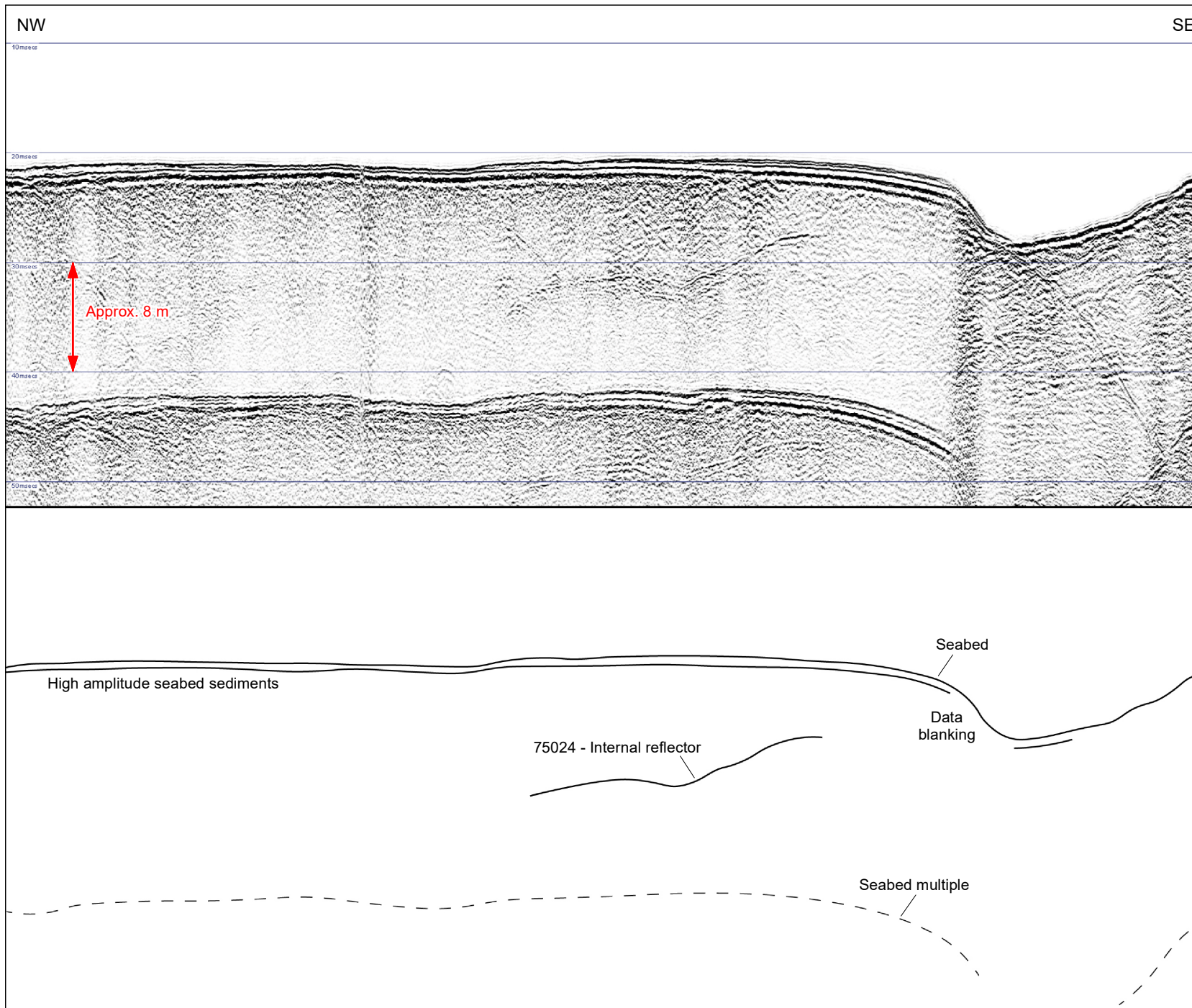
Date	By	QA
09/12/2022	KJF	SV
<b>Projection</b>	British National Grid	
<b>Scale (A4)</b>	1:6,553	
<b>Project no.</b>	5035 / 252400	



**IMMINGHAM EASTERN  
 RO-RO TERMINAL  
 PALAEOGEOGRAPHIC FEATURE  
 DATA EXAMPLE 2**

**Figure 15.4**





- Legend**
- Proposed Application Site
  - Archaeological Study Area 500m buffer
  - Indicative dredge area
  - Data example location
  - Vibrocore locations
- Paleogeographic**
- Cut and fill, P1
  - Cut and fill, P2
  - Fine grained deposits, P1
  - High amplitude reflector, P1
  - High amplitude reflector, P2
  - Internal reflector, P2
  - Chaotic unit, P2
  - Channel, P1

© ABPmer, All rights reserved, 2022.  
 Contains Ordnance Survey data © Crown copyright and database right 2022.  
 Created by Wessex Archaeology.  
 © Wessex Archaeology Ltd 2022, all rights reserved.

Date	By	QA
09/12/2022	KJF	SV
<b>Projection</b>	British National Grid	
<b>Scale (A4)</b>	1:12,500	
<b>Project no.</b>	5035 / 252400	



252400\_ProjectSugar\_fig 15.5.mxd



**IMMINGHAM EASTERN  
 RO-RO TERMINAL  
 PALAEOGEOGRAPHIC FEATURE  
 DATA EXAMPLE 3**

**Figure 15.5**



- Legend**
- Proposed Application Site
  - Archaeological Study Area 500m buffer
  - Survey boundary
  - Indicative dredge area

- Seabed features**
- A2\_H - Anomaly of likely anthropogenic origin but of unknown date; may be of archaeological interest or a modern feature
    -
  - A2\_L - Anomaly of possible anthropogenic origin but interpretation is uncertain; may be anthropogenic or a natural feature
    -
  - Seabed feature boundaries
  - Linear Seabed Features
  - Marine heritage receptors
  - Marine heritage receptor

© ABPmer, All rights reserved, 2022.  
 Contains UK Hydrographic Office, Historic Environment Record, and Ordnance Survey data © Crown copyright and database right 2022.  
 Created by Wessex Archaeology.  
 © Wessex Archaeology Ltd 2022, all rights reserved.

Date	By	QA
07/12/2022	NB / KJF	RM
<b>Projection</b>	British National Grid	
<b>Scale (A4)</b>	1:7,500	
<b>Project no.</b>	5035 / 252400	
252400_ProjectSugar_fig 15.6.mxd		

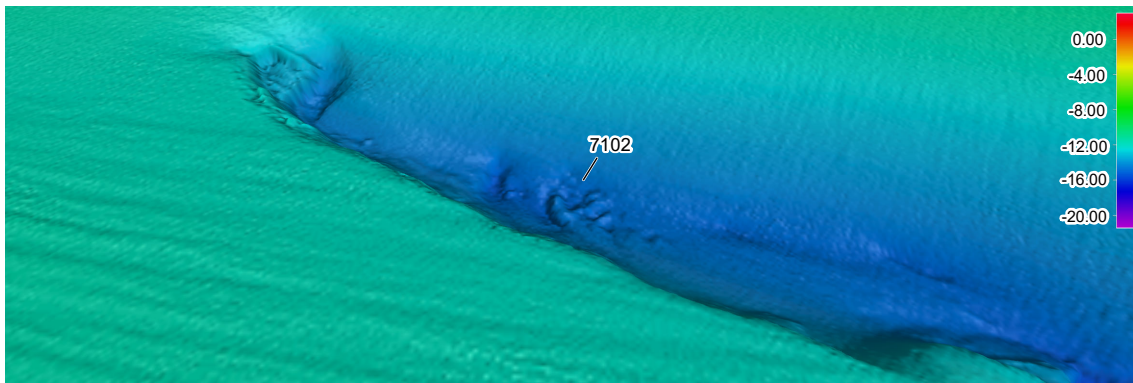


**IMMINGHAM EASTERN  
RO-RO TERMINAL**

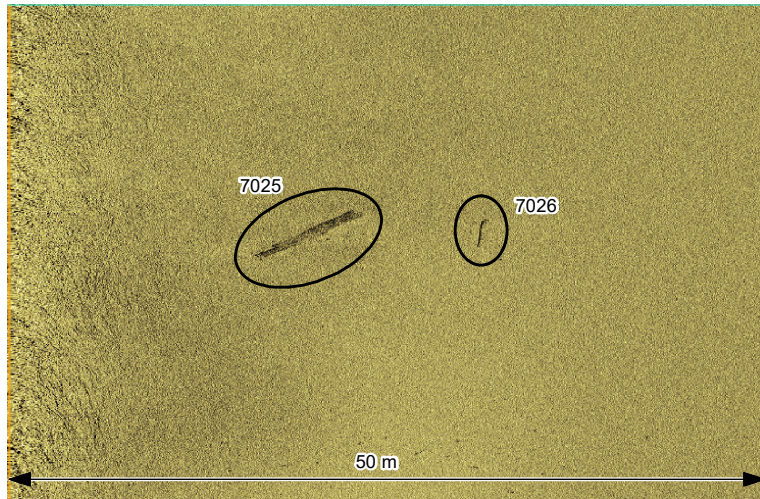
**SEABED FEATURES OF  
ARCHAEOLOGICAL POTENTIAL**

**Figure 15.6**

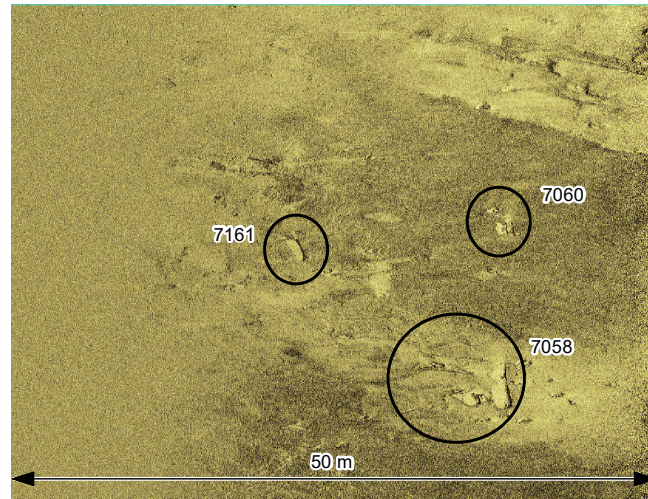




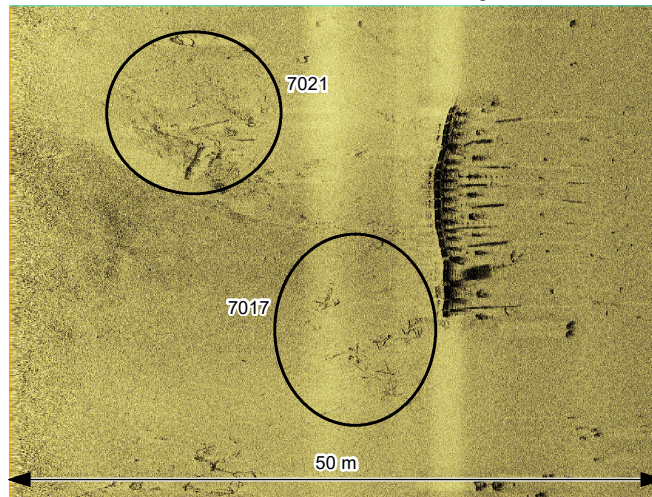
Multibeam bathymetry image of seabed disturbance **7102**, looking north, x1 vertical exaggeration



Sidescan sonar image of debris items **7025** and **7026**, measuring 11.3 x 2.2 x 0.4 m and 4.9 x 1.0 x 0.2 m respectively



Sidescan sonar image of dark reflector **7061**, measuring 6.6 x 0.2 x 0.2 m, debris item **7060**, measuring 10.8 x 8.3 x 0.4, and debris field **7058**, measuring 16.2 x 10.8 x 0.5 m



Sidescan sonar image of debris fields **7017** and **7021**, measuring 31.6 x 12.7 x 0.1 m and 28.7 x 12.6 x 0.5 m respectively

© ABPmer, All rights reserved, 2022.  
 Created by Wessex Archaeology.  
 © Wessex Archaeology Ltd 2022, all rights reserved.

Date	By	QA
07/12/2022	KJF	SV
<b>Projection</b>	N/A	
<b>Scale (A4)</b>	NTS	
<b>Project no.</b>	5035 / 252400	



252400\_ProjectSugar\_fig 15.7.mxd



**IMMINGHAM EASTERN  
 RO-RO TERMINAL  
 DATA EXAMPLES OF  
 SEABED FEATURES**

**Figure 15.7**





Obstructions 2002, 2005 and 2007, as seen from the revetment



Obstructions 2002 and 2005, as seen from the revetment



Rock-cut stairs (1001), looking towards the revetment

© ABPmer, All rights reserved, 2022.  
 Created by Wessex Archaeology.  
 © Wessex Archaeology Ltd 2022, all rights reserved.

Date	By	QA
07/12/2022	KJF	SV
<b>Projection</b>	N/A	
<b>Scale (A4)</b>	NTS	
<b>Project no.</b>	5035 / 252400	



252400\_ProjectSugar\_fig 15.8.mxd



**IMMINGHAM EASTERN  
 RO-RO TERMINAL  
 PHOTOGRAPHS OF INTERTIDAL  
 HERITAGE RECEPTORS**

**Figure 15.8**